



## Judges Select Craftsmanship Awards Winners

Judges of the 2016 Craftsmanship Awards deliberated last month to select winners from the 119 nominations submitted this year. The judges used their expertise in their respective fields

to carefully evaluate each submission and have selected 51



winner to receive awards. The following General Contractors have the honor of having this year's winners working on their projects:

- ◆ **Americaribe-Moriarty JV**
- ◆ **ANF Group**

- ◆ **Facchina Construction**
- ◆ **Gerrits Construction**
- ◆ **Gilbane Building Co.**
- ◆ **Kaufman Lynn Construction**
- ◆ **Kota Construction**
- ◆ **Miller Construction Co.**
- ◆ **Moss & Associates**
- ◆ **OHL-Arellano Construction Co.**
- ◆ **Pirtle Construction**

- ◆ **Plaza Construction**
- ◆ **RCC Associates**
- ◆ **Robins & Morton**
- ◆ **Sharpe Project**

- ◆ **Development**
- ◆ **Stiles Construction**
- ◆ **Suffolk Construction Co.**
- ◆ **The Marker Group LLC & Griffiths Construction Inc.**
- ◆ **Whiting-Turner Contracting Co.**
- ◆ **Woolems, Inc.**

The winners (a full list can be seen on page 3) will be honored at the 58th Annual Craftsmanship Awards Banquet on Thursday, November 10 at the Signature Grand in Davie. Please come out and help us recognize these craftsmen for their outstanding work!

For information about registering for the banquet please contact Jo Montenegro at 954-974-6333.

## Member News

**Gulf Building LLC** has been named one of Florida's top 100 private employers, an achievement recognized by the state's governor.

"Floridians like you are helping make our state the best place in the world to raise a family, have a great career, and enjoy a life full of opportunity," Gov. Rick Scott wrote in a letter to the company.

Gulf Building placed 13<sup>th</sup> in revenue growth among all private companies in a research report published by the South Florida Business Journal.

"We thank Gov. Scott for his commendation and will continue to do our best to help the state grow and Floridians prosper," said president and CEO John Scherer.

**Miller Construction Company** is building a high-profile Lauderdale BMW East showroom for Holman Automotive.

With a two-story showroom and attached five-level parking garage, the 283,430-square-foot project brings a strong, upscale design statement to a prime site just south of Downtown, at 1441 South Federal Highway. Opening is scheduled for spring 2017.



Holman BMW East

November 2016  
Vol. 27, 11  
Ft. Laud.

### In This Issue

- Judges Select Craftsmanship Awards Winners
- Member News
- Covering Florida with Experience and Expertise
- List of Craftsmanship Award Winners
- Meet the GCs Miami Pictures

Each month Construction FOCUS features a CASF member company, selected by drawing a business card from among those attending the monthly networking breakfast. The next breakfast, sponsored by Hensel Phelps, will be held on Thursday, November 17, 7:30 a.m. at the Courtyard Marriott on Cypress Creek.

## Covering Florida with Experience and Expertise

With a very strong presence in Florida, Edward Don & Company's Foodservice Equipment Division (FED) offers a full range of capabilities including design, specifications, mechanical rough-in drawings, procurement, job site management and installation services.

Edward Don & Company was founded in Chicago in 1921. The story of DON's Florida operations began in 1952 with the opening of a distribution center in Miami.

Today, FED, the company's kitchen design division, has 24 project teams in 11 cities around the country. Florida offices are located in Miramar, Lake Mary and Ft. Myers where they complete projects all over South Florida including offshore loca-



tions.

A culture of "doing everything right" coupled with a wealth of experienced employees give DON some big advantages in the Florida market. Yolanda Leal, Gabe

Gomez, Rick Snook and Earle Mann anchor the Miramar FED office. Each of these key people has between 20 and 30 years experience in the Industry. After almost a century of successful projects, the company sees its most significant accomplishments as the feeling of success when finishing a project of any size or duration, and getting the "Thank You" from the parties involved. Some of their most recent projects include Margaritaville in Hollywood Beach, RIU Hotel in South Beach and HYDE Residential Towers. Currently on the drawing board are Jade Signature, Pompano Beach House and Gulf Coast Village.

DON joined CASF in 2015 for the opportunity to meet contractors in a social environment, away from the heat of a project. Meeting people, learning about other companies and putting a human face to the business has helped FED become more successful by providing contacts, having discussions on specific project challenges and exploring future opportunities. They believe that the camaraderie fostered by CASF keeps them grounded and, to a large degree, humble.

Their ultimate goal is to turn over projects that are complete, properly started up and meet all of the owner/operator's expectations. CASF helps DON achieve this goal.

Edward Don is located at 11500 Miramar Parkway, #600 in Miramar. For more information on the services they offer please visit their website at [www.don.com](http://www.don.com) or call their office at (954) 378-7167.

**CONSTRUCTION ASSOCIATION of South Florida**  
2929 North West 62nd Street, Ft. Lauderdale, FL., 33309  
Phone: 954-974-6333  
[casf@casf.org](mailto:casf@casf.org)

### OFFICERS

Russell Anderson, Moss & Associates, President  
Mindy Szarowicz, Baker Concrete, First Vice President  
Jeff Slade, Miller Construction Company, Second Vice President  
Sid Miller, Miller Glass & Glazing, Secretary/Treasurer

### BOARD OF DIRECTORS

- ♦ Bruce Capon, Balfour Beatty Construction ♦ Rachel Elliot, Suffolk Construction
- ♦ Randy Farmer, CEMEX ♦ Michael W. Fee, Lotspeich Co. of Florida, Inc.
- ♦ Justin Lord, Central Broward Construction ♦ Brian Mueller, Southeast Mechanical Contractors
- ♦ Richard W. Schuenger, John Moriarty & Associates ♦ Max Turner, Steel Fabricators
- ♦ Doug Wallace, Stiles Construction Company ♦ Pete Zambon, DPR Construction

### IMMEDIATE PAST PRESIDENT

Frank Frione, GFA International

### PAST PRESIDENT

Bob Baer, Central Florida Equipment

- ♦ ASSOCIATION EXECUTIVE VICE PRESIDENT, John C. Siegle
- ♦ FINANCIAL ADVISOR, Patrick Brown, Crowe, Horwath, LLP
- ♦ LEGAL ADVISOR, Heath Eskalyo, Kelley Kronenberg  
Editor, Jo Montenegro

# 2016 Craftsmanship Award Winners

The winners of the 58th Craftsmanship Awards are:  
**DEMOLITION**, *K. Dean Geyer*, Wildcat, Demolition Specialists

**LANDSCAPING**, *Jorge Balarin*, Dixie Landscaping

**PAVERS**, *Fernando Ferreira*, UCC Group

**SITWORK**, *Cricket McKinstry*, American Engineering

**CONCRETE -**

**DECORATIVE**, *Sam Godbey*, Artistic Surfaces

**CONCRETE - FORMWORK COMMERCIAL**, *Clayton Hamby*, Baker Concrete Construction

**CONCRETE - FORMWORK RESIDENTIAL**, *Art Axtell*, Axtell Construction, LLC

**CONCRETE - SLAB**, *Alvino Banuelos*, Go-Tilt Construction

**CONCRETE - TILT WALL ERECTION**, *Angel Gutierrez*, Woodland Tilt-Up

**CONCRETE - TILT-UP**, *Arturo Tovar*, Woodland Tilt-Up

**MASONRY - GLAZED BLOCK**, *Douglas Mackenzie*, Emerald Construction

**STONEWORK - CAST/CARVED**, *Donaldo Perez*, Premier Stoneworks

**STONEWORK - MARBLE**, *Dave Souza*, Marble Crafters

**METAL FABRICATION**, *Clifton McClane*, Birdair, Inc.

**METAL TRUSSES**, *William Malo*, Metalite Truss Systems of Fla, Inc.

**ORNAMENTAL METALS**, *Eric Garey*, Hoover Architectural Products

**STRUCTURAL STEEL**, *Dean Allmon*, East Coast Metal Structures, Corp.

**STRUCTURAL STEEL**

**ERECTION**, *Carlos Moreno*, Florida Atlantic IronWorks

**STRUCTURAL STEEL ERECTION**, *Luis Videla*, Florida Atlantic IronWorks

**ARCHITECTURAL WOODWORK**, *Kevin Guillotte*, Cayman National Manufacturing & Installation, Inc.

**FINISHED CARPENTRY**, *Nelson Bonilla*, Hollywood Woodwork

**HEAVY TIMBER**, *David White*, Structural Roof Systems

**MILLWORK**, *Romulo Sagnotti*, Yogui International, Inc.

**ROOFING - CLAY TILE**, *Ross Carpentier*, Carpenter's Roofing & Sheet Metal

**ROOFING - METAL**, *Fidel Chavez*, Gulfstream Roofing Inc.

**GLASS & GLAZING - CURTAIN WALL**, *Greg Bogdanchik*, Glass Engineering Inc.

**GLASS & GLAZING - INTERIOR**, *Hector Maldonado*, Corporate Interiors Inc.

**CEILING - FIRE RATED BOARD ASSEMBLY**, *Gustavo Rubio*, KENPAT Fireproofing

**CEILING - PRODEMA**, *Mark Horsch*, Commercial Builders, Inc.

**CEILING - STRETCH FABRIC**, *Dominique Bachelet*, High Tech Ceiling

**COMPOSITE WALL PANELS**, *Miguel Membreno*, CM Installers

**DRYWALL**, *Robert Ross*, Lotspeich Co. of Florida, Inc.

**DRYWALL**, *Joe Tine*, Lotspeich Co. of Florida, Inc.

**DRYWALL - ACT**, *Lico*

*Payan*, Lotspeich Co. of Florida, Inc.

**DRYWALL - EIFS**, *Orly Lago*, USA Plastering

**FLOORING -**

**CARPET**, *Brad Eckman*, Floranada Floor Covering

**LATH & STUCCO**, *Luis Insua*, Advanced Stucco

**PAINTING**, *Gregorio Lopez*, Prachel Painting & Waterproofing, Inc.

**PLASTER - COMMERCIAL**, *Hank Vogel*, State-Line Products of South Florida, Inc.

**PLASTER - RESIDENTIAL**, *Tony Straw*, Jack Vogel Simulated Brick & Stone

**TERRAZZO**, *Rafael Cambronero*, Artistic Surfaces

**TILE - CERAMIC**, *Elder Lucas*, Floorpro, Inc.

**SWIMMING POOL**, *Steve Hackl*, Hackl Pools

**MECHANICAL PIPING**, *Greg Sylvain*, Southeast Mechanical Contractors

**PLUMBING - COMMERCIAL**, *Jaime Alvarez*, Olympia Plumbing

**PLUMBING - RESIDENTIAL**, *Jason Wertz*, KCL Plumbing

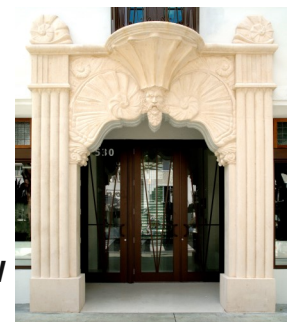
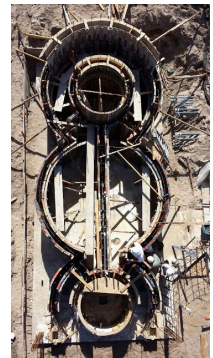
**ELECTRICAL**, *Ryan Singh*, M.S.P. Electric, Inc.

**ELECTRICAL**, *Jose Diaz*, Meisner Electric Inc.

**ELECTRICAL - RENOVATION**, *Kerson Narcisse*, Meisner Electric Inc.

**ELECTRICAL - ROUGH**, *James Mills*, Meisner Electric Inc.

**ELECTRICAL - LOW VOLTAGE**, *Dennis Kelly*, Electrical Specialty



# Meet the GCs-Miami

Thursday, October 13, 2016

