



CASF Officers & Directors

The 2015 Election was held and the Officers & Directors for 2015-2016 will be installed at the 65th Annual Installation banquet on Thursday, June 4, at the Renaissance Hotel in Plantation. The incoming officers are: **President - Frank Frione**, GFA International, **First Vice President - Russell Anderson**, MOSS, **Second Vice President - Mindy Szarowicz**, Baker Concrete Construction, **Secretary/Treasurer - Jeff Slade**, Miller Construction Company; **Immediate Past President - Bob Baer**, Central Florida Equipment and **Past President - Craig Heiser**, M.C. Velar Construction.

The Directors elected for the 2015-17 term are:



Frank Frione, CASF President

Deborah Beetson, DPR Construction; **Bruce Capon**, Balfour Beatty Construction Co.; **Michael O'Donoghue**, Suffolk Construction; **Rick Schuerger**, John Moriarty Construction and **Doug Wallace**, Stiles Construction Company.

Directors completing their term in 2016 are **Randy Farmer**, CEMEX; **Mike Fee**, Lotspeich Co. of Fla.; **Justin Lord**, Central Broward Construction; **Brian Mueller**, Southeast Mechanical Contractors; and **Sid Miller**, Miller Glass & Glazing.

Going off the Board are Tim Anderson (2003 to 2015), JWR Construction Services and Chris Long (2011 to 2015), Kaufman Lynn Construction.

Member News

Tutor Perini Building Corp. and **Baker Concrete Construction** recently set a construction record when 11,677 cubic yards of concrete was poured continuously for 23-hours to construct the foundation of the 83-story Panorama Tower in Miami.

When completed the Panorama Tower will be the largest residential tower in the East, South of New York City, and will include 821 luxury rental apartments; 208 hotel rooms; 100,000 sq. ft. of medical related space; 50,000 sq. ft. of high-end retail and a 2,000 car parking garage.

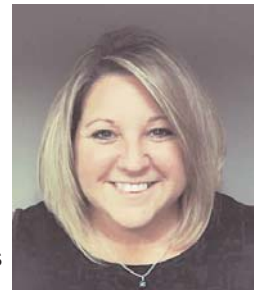
Jennifer Thompson, was recently promoted to the new Marketing Coordinator at **JWR Construction Services**. Jennifer previously worked as their Contract Administrator and has been with the JWR family since 2008. She will be responsible for the firm's future business development and marketing.

Superintendent of Schools Alberto M. Carvalho, School Board Chair Perla Tabares Hantman and President of **Link Construction Group**, Guillermo Fernandez recently gathered at Miami Lakes Educational Center and Technical College for a General Obligation Bond project ribbon-cutting event.

June 2015
Vol. 26, No. 06
Ft. Lauderdale,
Florida



Panorama Tower
23-hour Concrete Pour



Jennifer Thompson



2015 Summer Getaway & Planning Meeting
Hilton Key Largo Resort
August 14, 15 and 16

INSIDE:

CASF Charity Golf Tournament Pics

Engineering & Design/Build Services

Each month Construction FOCUS features a CASF member company, selected by drawing a business card from among those attending the monthly networking breakfast. The next breakfast, sponsored by Plaza Construction, will be held on Thursday, June 18, 7:30 a.m. at Shula's Hotel in Miami Lakes.

Twenty First Century Engineering was founded in 1989 by John Carroll, Jr., PA and Gerald Cataldo. Then in 1990 they opened their doors in the International Building in eastern Fort Lauderdale and by 1995

practice with offices in Fort Lauderdale, Vero Beach and Lakeland. In 2015, Twenty First Century engineering celebrated 25 years of continuous service to architects, contractors, municipalities and property owners.

Twenty First Century Engineering is committed to growing of their business by providing clients with high quality engineering, construction design/build services and being good stewards in the communities in which they serve. Today, the company offers a wide range of services with an emphasis on engineering, construction, forensic engineering, environmental services and building code analysis & compliance. They distinguish themselves from other companies by holding dual licenses in engineering and general contracting, which means an efficient,

turnkey process for their clients. They also pride themselves on a working culture that encourages creativity and innovation, a commitment to excellence and customer service.

Since opening their doors in 1989, which was during a time of economic downturn throughout the State, Twenty First Century Engineering has proven that they can overcome many obstacles to serve their clients, as well as their community. In 1992, for example, when Hurricane Andrew changed the face of South Florida, they expanded their practice to forensic engineering to meet the emerging needs of Floridians. Some of their recent projects include concrete restoration for Miami Dadeland Marriott and Daria Condominium.

John Carroll, President and co-founder of Twenty First Century Engineering, joined CASF in 1993 as part of the company's outreach to local communities in order to network and establish new and enduring relationships with subcontractors, suppliers and general contracting companies. Carroll says, "What is most beneficial about the Construction Association of South Florida is the diverse opportunities and venues to network and get to know the company decision makers."

Twenty First Century Engineering is located at 826 NE 20th Avenue, Fort Lauderdale, FL 33304. For more information about the services they provide please contact them at 954-522-6446 or visit their website at www.21st-centuryengineer-ing.com.



they purchased a waterfront apartment building not too far away and converted it to serve as the company's headquarters. As the company continued to grow, it expanded its services and started a sister company, 21st Century Design/Build in 2003. What started out as a two person office has since grown into a multidisciplinary

CONSTRUCTION ASSOCIATION of South Florida

2929 North West 62nd Street, Ft. Lauderdale, FL., 33309
Phone: 954-974-6333; FAX: 954-974-6633
casf@casf.org

OFFICERS

Bob Baer, Central Florida Equipment, President
Frank Frione, GFA International, First Vice President
Russell Anderson, Moss & Associates, Second Vice President
Mindy Szarowicz, Baker Concrete, Secretary/ Treasurer

BOARD OF DIRECTORS

♦**Tim Anderson**, JWR Construction Services ♦**Brian Mueller**, Southeast Mechanical Contractors
♦**Randy Farmer**, CEMEX ♦**Michael W. Fee**, Lotspeich Co. of Florida, Inc.
♦**Chris Long**, Kaufman Lynn Construction ♦**Justin Lord**, Central Broward Construction
♦**Sid Miller**, Miller Glass & Glazing ♦**Michael O'Donoghue**, Suffolk Construction
♦**Richard W. Schuerger**, John Moriarty & Assoc. of FL. ♦**Jeff Slade**, Miller Construction Company

IMMEDIATE PAST PRESIDENT

Craig Heiser, M.C. Velar Construction

PAST PRESIDENT

Doug Wallace, Stiles Construction Company

♦ASSOCIATION EXECUTIVE VICE PRESIDENT, **John C. Siegle**
♦FINANCIAL ADVISOR, **Robert Benson**, Crowe, Horwath, LLP
♦LEGAL ADVISOR, **Heath Eskalyo**, Kelley Kronenberg
Contributing Writer, **Jo Montenegro**

Construction Focus is the official publication of the Construction Association of South Florida. Article suggestions and submissions for publication consideration should be forwarded to the Executive Vice President.

Promoting the Trades at Local Academies



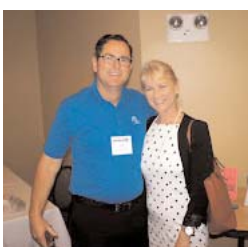
May 11 was an exciting day at Seminole Ridge High Schools' Weitz Academy of Construction, as its instructors accepted an equipment donation of almost \$8,000 from the Construction Association of South Florida (CASF). "Some of our equipment is 10 years old and has been used hard," academy teacher Mr. Rick Terkovich (2nd from left) said. "Our air compressor and some of our scaffolding are pretty much worn out. The generosity of the CASF will really help the academy out—this new stuff is great!" The Construction Association of South Florida is dedicated to promoting the skilled trades as career choices for our youth throughout the Palm Beach, Broward, and Miami-Dade counties, supporting local construction academies to build a skilled workforce for a future South Florida. The SRHS construction academy is currently working on their fourth house for Habitat for Humanity and looks for-

Meet the Developers

Courtyard by Marriott
Tuesday, May 19



Panel Members: (l to r) **Mario Cabrera**, FDOT; **Shelley Meloni**, Broward County Schools; **Malcolm Butters**, Butters Constr. & Dev.; **Ron Chorron**, Fortune International; and **Matt Elish**, PMG



CONSTRUCTION
FOCUS

CONSTRUCTION ASSOCIATION OF SOUTH FLORIDA

3500 NW 9TH AVENUE
 FORT LAUDERDALE, FL 33309

ROUTE TO:



Charity Golf Classic Raises over \$80k

Ft. Lauderdale Country Club, Thursday, May 7



1st Place South Course
 Suffolk Construction



1st Place North Course
 East Coast Metal Decks



2nd Place North Course
 C. Davis Electric



Straightest Drive South
 Randy Zerra



Straightest Drive North
 Chris Delgado



2nd Place South Course
 Baker Concrete Construction



Closest to the Pin South
 Jerry Shell



Closest to the Pin North
 Scott Boggs



3rd Place South Course
 Thermal Concepts



3rd Place North Course
 Northwestern Mutual



Longest Drive North
 Brad McAfee