

Scholarship Support Grows

In addition to the four title sponsors for **A Toast To The Twenty's** scholarship fundraiser, Thursday, March 13, BAKER CONCRETE CONSTRUCTION, BALFOUR BEATTY CONSTRUCTION, CROWE CHIZEK AND CO. and JAMES A. CUMMINGS, we applaud the overwhelming support from the following:

Gambling Sponsors
GENERAL CRANE USA, PECKAR & ABRAMSON, MOSS & ASSOCIATES and WHITING-TURNER CONTRACTING COMPANY

Prohabitation Sponsors
STILES CONSTRUCTION CO., ROYAL CONCRETE CONCEPTS, MILLER CONSTRUCTION CO. and COASTAL CONSTRUCTION GROUP

Silver Bullet Sponsors
AMERICAN ENGINEERING & DEVELOPMENT, COASTAL MASONRY, HYPOWER, CYRUS TECHNOLOGIES, NORTH RIDGE ELECTRIC, JJW CONSTRUCTION CO., SOUTHEAST MECHANICAL CONTRACTORS, GANCEDO REBAR SERVICE, CORESLAB STRUCTURES (MIAMI), SUFFOLK CONSTRUCTION, ALUMI-GLASS, CAYMAN NATION-

AL MANUFACTURING, BALFOUR BEATTY CONSTRUCTION, DELTA PAINTING, and SOVEREIGN CONSTRUCTION SERVICES.

"This is the third year that we have put on this fun event to raise money for an endowment at Florida International University's department of Construction Management and continued scholarships at University of Florida's Rinker School of Building and Construction as a way of attracting college grads to South Florida", said Judy Wong, chairman of the Scholarship Fund Raising committee, *"Each year the support grows in relationship to the membership participation of this great event."*

To add your company as a sponsor, call 954-974-6333. Reservations are also now being taken. Don't miss out.

Do you have nominations for the 50th Annual Craftsmanship Awards?

Don't wait until the last minute!
Deadline July 15, 2008

Member News

Bovis Lend Lease partnered with Habitat for Humanity's Blitz Build 2008, an accelerated construction event in which ten houses were built in just two weeks. With a donation of \$50,000 and employees to help build the house, Bovis Lend Lease is proud to have built a home for Ms. Deshawn Simmons, a single mother of two.

Along with the help of subcontractors **Alan W. Smith, Baker Concrete, Pass Painting,** and **JamPro Inc.** The team of skilled volunteers accelerated the completion of Ms. Simmons' home by one full day during the first week.

Moss & Associates has begun construction of a new energy-efficient U.S. Citizenship and Immigration Services (USCIS) facility in Royal Palm Beach.

Moss is general contractor for a \$60 million regional construction program, which includes the new USCIS facility in Royal Palm Beach as well as the agency's field offices in Hialeah, Kendall, Miami and Oakland Park.

All five new South Florida facilities are being constructed to meet Silver Certification for Leadership in Energy and Environmental Design (LEED) criteria.

March 2008
Vol. 19, No. 03
Ft. Lauderdale,
Florida



Simmons' House



USCIS in Royal Palm Beach

INSIDE:

February Membership Mixer Photos

Specializing in Commercial Construction

Each month Construction FOCUS features a CASF member company, selected by drawing a business card from among those attending the monthly networking breakfast. The next breakfast, sponsored by Skanska USA, will be held on Thursday, March 20, 7:30 a.m. at the Courtyard by Marriott-Cypress Creek in Ft. Lauderdale.

Banner Supply Company is your one stop shop for all types of building materials. They handle a full line of building products, such as drywall tools, sheetrock, plaster, steel studs, drywall, gypsum, plaster and lumber just to name a few. Banner Supply Company is your



Interior and Exterior Specialist. Their multi-million dollar building products inventory assures you they will have what you need when you need it. Banner Supply has provided quality building materials for some of the finest projects in Florida. Their slogan is

"Large enough to serve you. Small enough to know you".

With over 55 years in business, Banner Supply Company was started when the founders Barney Landers and Sidney Falk returned from World War II and they went to work for Samson Concrete. By 1953, they decided to go out on their own and started Banner Supply Company. Offering a full line of building products for contractors, they were located at Douglas Road and US 1 until 1981. Currently the business is run by Barney's sons, Arthur Landers, President, Jack Landers, Vice President with Jon Graser, Donald "Mickey" Coblentz and Gary Carrocce, Partners.

Banner Supply has expanded throughout Florida. From one warehouse with only two employees to now six warehouses

with more than 200 employees using state-of-the-art equipment. They cover the state with six locations in Pompano Beach, Miami, West Palm Beach, Tampa, Port St Lucie and Ft Myers.

Michael Ferrante, Broward Sales Manager, comments, "The top qualities of our company are employee product knowledge, service and our key personnel at all locations can answer all requests immediately."

"Banner Supply specializes in commercial construction, and has a large inventory of structural and drywall studs, insulation, lumber and all lines of gypsum products. Being able to buy from all of the major steel and drywall manufacturers allows us to be competitive in a dynamic market", comments Ferrante. "The majority of our work is in schools, office buildings, condos and tenant build-outs. We have been fortunate to align ourselves with quality sub-contractors who have continued to support us. This year appears to be a volatile one to say the least; however we are ready for the challenge."

Banner Supply joined the Construction Association of South Florida in 2001 and their employees attend many of the networking events. Ferrante notes, "CASF allows us to meet like-minded people with similar goals."

Banner Supply Company is located at 1660 S.W. 13TH Court, Pompano Beach, FL 33069. Contact Michael Ferrante at 954-781-2399 or email mikef@bannersupply.com. You can also check out their website at www.bannersupply.com.

CONSTRUCTION ASSOCIATION of South Florida

2929 North West 62nd Street, Ft. Lauderdale, FL., 33309

Phone: 954-974-6333; FAX: 954-974-6633

info@cASF.org

OFFICERS

Timothy M. Anderson, Balfour Beatty Construction Co., President
Michael W. Fee, Lotspeich Co. of Florida, Inc., First Vice President
Richard W. Schuerger, John Moriarty & Assoc. of FL., Second Vice President
Geoffrey Bunnell, James A. Cummings, Inc., Secretary/ Treasurer

BOARD OF DIRECTORS

•**Russell Anderson**, Moss & Associates •**John Bennett, Sr.**, Rinker Materials Corporation
•**Bob Baer**, Central Florida Equipment •**Bill Bower**, Southeast Mechanical Contractors
•**Craig Heiser**, Whiting-Turner Contracting Co. •**George Huettel**, Cyrus Technologies, Inc.
•**Don Marks**, Form Works, Inc. •**Thomas C. Murphy, III**, Coastal Construction Group
•**Jeff Slade**, Miller Construction Company •**Doug Wallace**, Stiles Construction Company

IMMEDIATE PAST PRESIDENT

Jim Robertson, General Crane USA

•ASSOCIATION EXECUTIVE VICE PRESIDENT, **John C. Siegle** •LEGAL ADVISOR, **Alexander Williams**, Ferencik, Libanoff, Brandt & Williams •FINANCIAL ADVISOR, **Robert Benson**, Crowe, Chizek and Company
•CONTRIBUTING WRITER, **Joyce Salamone**

Construction Focus is the official publication of the Construction Association of South Florida. Article suggestions and submissions for publication consideration should be forwarded to the Executive Vice President.

Fire Safety on Construction Sites

Each year, according to the NFPA there are an estimated 4,800 construction site fires that cause \$35 million in property loss. Firefighters injured in construction fires are twice as likely to be hit or struck by debris and other objects as firefighters at other fire sites. Fire incidence at construction sites increases as the work day progresses. The causes of 71% of construction site fires are arson and open flames.

In May 2000, an accidental six-alarm fire destroyed a luxury condo complex under construction and heavily damaged a historic post office in Tampa. The fire ignited when a forklift hit a utility pole and knocked down a transformer that fell in combustible construction debris.

Last year, in Pensacola, Florida, workers installing a new storm drainage system detected a strong gas odor. Company officials, however, did not test the atmosphere or report the leak to the gas company. Later that morning, a company employee was instructed to enter the excavation to retrieve a laser surveying instrument from a sewer pipe. The worker was severely burned when an explosion and fire occurred shortly after he entered the pipe. Another worker, standing at the edge of the trench, was slightly burned as the flash fire exited the pipe. The severely burned employee died six days later.

OSHA Standard Number 1926.24, Fire protection and

prevention states: The employer shall be responsible for the development and maintenance of an effective fire protection and prevention program at the job site throughout all phases of the construction, repair, alteration, or demolition work. The employer shall ensure the availability of the fire



You don't want this guy showing up at your job!

protection and suppression equipment required by Subpart F of this part.

Standard 1926.35 applies to all emergency action plans required by the OSHA standard. The emergency action plan shall be in writing and shall cover those designated actions employers and employees must take to ensure employee

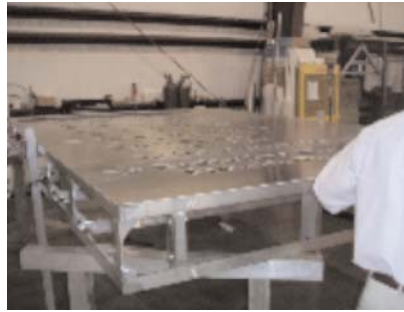
safety from fire and other emergencies. Before implementing the emergency action plan, the employer shall designate and train a sufficient number of persons to assist in the safe and orderly emergency evacuation of employees.

It is important that on each project there is a written Fire Protection Plan and it is communicated to each employee working at the site. Included should be:

- ◆ Procedures for reporting emergencies to the local fire department
- ◆ Procedures for emergency notification of workers and evacuation of the site
- ◆ Procedures for hot work operations, handling of hazardous materials and removal of all combustible debris
- ◆ Procedures for maintaining access roads. It is important that all construction sites are accessible to fire trucks and emergency vehicles.
- ◆ Floor plans identifying exits, stairs, fire extinguishers and evacuation routes
- ◆ Name and contact numbers of the persons responsible for the Fire Protection Plan

Fires on construction sites happen, but they can also be prevented. It is important to be aware of the hazards that can start a fire. Training and preparedness are essential to reduce injuries and save lives in case of an emergency. For more information, check out the following websites: www.osha.gov and www.nfpa.org.

CASF's February
Membership Mixer
Baron Sign
Manufacturing



Celebrating their 25th Anniversary



ROUTE TO:

3500 NW 9TH AVENUE
FORT LAUDERDALE, FL 33309

CONSTRUCTION ASSOCIATION OF SOUTH FLORIDA

